

Somebody imagines the future.  
HT keeps it under control.



## PV TESTERS

Instruments for the performance verification, maintenance and safety testing of photovoltaic systems



We build the future since 1983

Somebody  
imagines the  
future.  
HT keeps it  
under control.

**Systems** for the **production of electric energy** through the conversion of **solar radiation** immediately represented a decisive step towards a **virtuous** and **eco-sustainable future**.

A future in constant evolution that needs to be looked after, controlled, managed, guaranteed in an accurate and professional way.

This is why **HT Italia** provides you with the **most suitable** and performing instruments for **managing photovoltaic systems**, from **testing** to **maintenance**, from **checking efficiency** to **quality analyses**, all **WI-FI**, immediately on your devices.

Future can be imagined, HT guarantees it.



NEW



FUNCTION

**GFL**

Identification and localization of the fault

INSULATION

**1500 VDC**

For photovoltaic systems

Tests in

**DUAL**

MODE

Localization of the faulty pole

ORDER CODE **HV0PVISO**

## PV-ISO TEST

MULTIFUNCTION INSTRUMENT FOR COMMISSIONING, TESTING THE ELECTRIC SAFETY AND SEARCHING FOR FAULTS

- › Insulation measurement up to 1500VDC
- › Localization of the faulty module through the new GFL function
- › Insulation measuring modes DUAL and TIMER for checking the state of deterioration of the insulation
- › Continuity of protective conductors with 200mA



SEE THE  
TECHNICAL  
DATA SHEET



WATCH  
THE VIDEO  
TUTORIAL

**WiFi**

WIFI  
CONNECTION

I-V CURVE  
MAX

**15A**

MAX  
**1500 V**



ORDER CODE **HV00500W**

## I-V500w

I-V CURVE TRACING OF MODULES AND STRINGS

- › I-V curve up to 1500V and 10A or up to 1000V and 15A
- › Power measurement of a module or a string
- › Open-circuit voltage (Voc) up to 1500V
- › Short-circuit current (Isc) up to 15A
- › Radiation measurement
- › Environmental and Cell temperature measurement
- › No distance limit for environmental measurements through remote unit SOLAR-02
- › AUTOSTART to run the tests automatically
- › WiFi connection to smartphones and tablets



SEE THE  
TECHNICAL  
DATA SHEET





## AUTO TEST

INSULATION MAX  
**1000 V**

ORDER CODE **HV00PVCS**

## PV CHECKS

MULTIFUNCTION INSTRUMENT FOR COMMISSIONING TESTS AND PERFORMANCE VERIFICATION

- › Insulation measurement up to 1000VDC
- › Open-circuit voltage measurement up to 1000V DC
- › Short-circuit current measurement up to 15A at 1000VDC
- › Continuity of protective conductors with 200mA
- › Polarity
- › AUTO SEQUENCE
- › Performance logging of PV strings



SEE THE  
TECHNICAL  
DATA SHEET



TOUCH-SCREEN SYSTEM

EFFICIENCY  
**LOGGING**

POWER  
**QUALITY**  
ANALYSIS

ORDER CODE **HV00300N**

## SOLAR300N

MULTIFUNCTION INSTRUMENT FOR EFFICIENCY OF PHOTOVOLTAIC SYSTEMS LOGGING AND POWER QUALITY ANALYSIS

- › Verification and logging of the efficiency of the photovoltaic system
- › Synchronized measurement of environmental parameters through remote unit without distance limits
- › Simultaneous measurement of: voltages and currents on AC and DC side, solar radiation, temperature of photovoltaic panels
- › Mains analysis and energy consumption analysis



SEE THE  
TECHNICAL  
DATA SHEET



WIFI CONNECTION

I-V CURVE  
MAX

**15A**

AUTO  
**TEST**

MAX  
**1500 V**

ORDER CODE **HV000IVE**

## SOLAR I-Ve

I-V CURVE TRACING OF PHOTOVOLTAIC MODULES AND STRINGS + EFFICIENCY OF THE PHOTOVOLTAIC SYSTEM

- › Measurement of inverter efficiency in single-string single-phase systems
- › I-V curve up to 1500V and 10A or up to 1000V and 15A
- › Power measurement of a module or a string
- › Open-circuit voltage (Voc) up to 1500V
- › Short-circuit current (Isc) up to 15A
- › Environmental and Cell temperature
- › No distance limit for environmental measurements through remote unit SOLAR-02
- › AUTOSTART to run the test automatically
- › WiFi connection to smartphones and tablets



SEE THE  
TECHNICAL  
DATA SHEET



**CAT IV**  
**300V**  
AC

**CAT III**  
**1000V**  
DC

ORDER CODE **HVMPP300**

## MPP300

ACCESSORY FOR MEASURING AND RECORDING THE EFFICIENCY OF A SINGLE-PHASE AND THREE-PHASE MULTISTRING PHOTOVOLTAIC SYSTEM (UP TO 3 MPPT)

- › Simultaneous analysis of 3 strings
- › Compatible with SOLAR300N and SOLAR I-Ve
- › Integrated rechargeable battery
- › Practical hard anti-shock case
- › Small size (mm 300x265x140) for extreme portability



SEE THE  
TECHNICAL  
DATA SHEET



WIFI CONNECTION

I-V CURVE

**15A**

MAX **1000 V**

ORDER CODE **HV00400W**

## I-V400w

I-V CURVE TRACING ON PHOTOVOLTAIC MODULES AND STRINGS

- › I-V curve up to 1000V and 15A
- › Power measurement of a module or a string
- › Open-circuit voltage (Voc) up to 1000V
- › Short-circuit current (Isc) up to 15A
- › Solar radiation measurement
- › Environmental and Cell temperature
- › No distance limit for environmental measurements through remote unit SOLAR-02
- › AUTOSTART to run the test automatically
- › WiFi connection to smartphones and tablets



SEE THE TECHNICAL DATA SHEET



ORDER CODE **HA000065**

## HT65

DIGITAL MULTIMETER TRMS

→ **TRMS**

MAX **1500 V**

**CAT IV 600V AC**



SEE THE TECHNICAL DATA SHEET



ORDER CODE **HP009025**

## HT9025

AC/DC CLAMP METER WITH DATA LOGGER FUNCTION

→ **TRMS AC+DC**

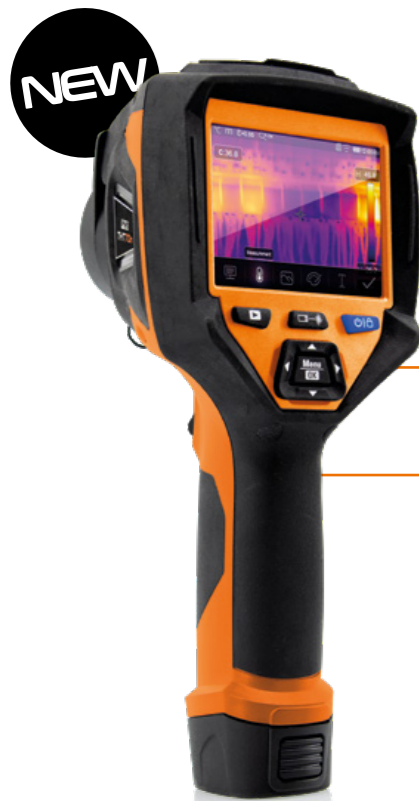


**AUTO RANGE**

MAX **1500 V**



SEE THE TECHNICAL DATA SHEET



**NEW**



WIFI CONNECTION

BODY **TEMPERATURE SCREENING**

**384x288** PIXEL

**RECHARGEABLE BATTERY**

ORDER CODE **HN000070**

## THT70

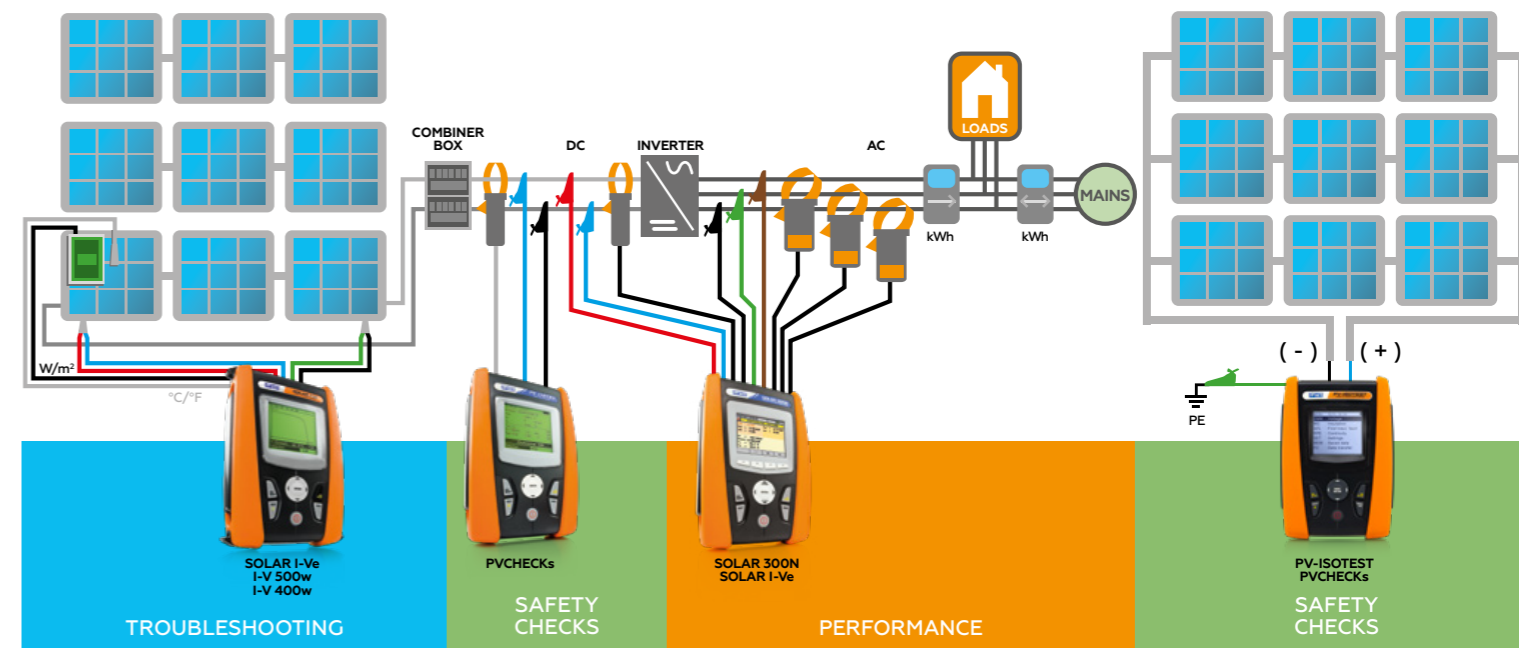
ADVANCED INFRARED THERMAL CAMERA WITH TOUCH SCREEN

- › UFPA IR sensor
- › Resolution: 384 x 288 pxl / 17µm
- › Thermal sensitivity: <0.05°C @ 30°C / 50mK
- › Visual range: lens 22mm
- › Image focusing: Manual on lens
- › Frequency: 50Hz
- › Colour palettes: 8 standard + 4 isotherm lines
- › Camera type: 5Mpxl, FOV 59°
- › Display: 3.5" TFT colour display with capacitive touch-screen, high brightness
- › IR, Visual, Fusion PiP, Auto Fusion
- › Digital zoom: 1x ÷ 32x
- › Video output: HDMI



SEE THE TECHNICAL DATA SHEET

Connection diagram





## ACCESSORIES

	SOLAR I-Ve	I-V400w	I-V500w	SOLAR300N	PVCHECKs	PV-ISOTEST	MPP300
<b>TOPVIEW2006</b> PC Windows software + USB/optical cable	S	S	S	-	S	S	-
<b>TOPVIEW2007</b> PC Windows software + USB cable	-	-	-	S	-	-	-
<b>PT300N</b> Temperature probe	S	O	O	S	O	-	-
<b>SOLAR-02</b> Remote unit	S	O	O	S	O	-	-
<b>KITGSC4</b> Set of 4 cables + 4 alligator clips	S	S	S	-	S	S	-
<b>KITPVMC3</b> Set of 2 adapters with MC3 connectors	S	S	S	-	-	-	-
<b>KITPVMC4</b> Set of 2 adapters with MC4 connectors	S	S	S	-	-	-	-
<b>KITPCMC3</b> Set of 2 adapters with MC3 connectors	-	-	-	-	S	O	-
<b>KITPCMC4</b> Set of 2 adapters with MC4 connectors	-	-	-	-	S	S	-
<b>KIT800</b> Set of 5 cables + 5 alligator clips	-	-	-	S	-	-	-
<b>KITMPPACC</b> Set of 4 alligator clips	-	-	-	-	-	-	S
<b>KITMPPACW</b> Set of 4 cables	-	-	-	-	-	-	S
<b>KITMPPDCC</b> Set of 2 alligator clips	-	-	-	-	-	-	Sx3
<b>KITMPPDCW</b> Set of 2 cables	-	-	-	-	-	-	Sx3
<b>KITPVEXT25M</b> Green and black 25m extensions	O	O	O	-	O	-	-
<b>KITKELVIN</b> Twin-cable set for AUTO SEQUENCE tests	O	O	O	-	-	-	-
<b>606-IECN</b> Connector with magnetic tip	O	O	O	O	O	O	O
<b>A0055</b> Power supply	-	-	-	S	-	-	S
<b>A0057</b> Power supply	-	-	-	O	-	-	O
<b>PT400</b> Stylus	-	-	-	S	-	-	-
<b>HT304N</b> Reference cell	S	S	S	S	O	-	-
<b>M304</b> Mechanical inclinometer	S	S	S	-	O	-	-
<b>ACON3F4M</b> Adapter	-	-	-	-	-	-	Sx3
<b>HT4004</b> Standard 10-100A DC clamp, 30 mm	S	-	-	S	S	-	O
<b>HT98U</b> Standard 1000A DC clamp, 50 mm	O	-	-	O	O	-	O
<b>HP30D1</b> Standard 1000A DC clamp, 83 mm	O	-	-	O	O	-	O
<b>HT4005K</b> Standard 200A AC clamp, 40 mm	S	-	-	Sx3	-	-	O
<b>HT4005N</b> Standard 5-100A AC clamp, 20 mm	O	-	-	O	-	-	O
<b>HT96U</b> Standard 1-100-1000A AC clamp, 54 mm	O	-	-	O	-	-	O
<b>HT97U</b> Standard 10-100-1000A AC clamp, 54 mm	O	-	-	O	-	-	O
<b>HP30C2</b> Standard 200-2000A AC clamp, 70 mm	O	-	-	O	-	-	O
<b>HP30C3</b> Standard 3000A AC clamp, 70 mm	O	-	-	O	-	-	O
<b>HTFLEX33E</b> Flexible 300-3000A AC clamp, 174 mm	-	-	-	O	-	-	O
<b>HTFLEX35E</b> Flexible 300-3000A AC clamp, 274 mm	-	-	-	O	-	-	O
<b>BORSA2051</b> Soft carrying bag	-	-	-	-	S	-	S
<b>VA500</b> Rigid carrying case	S	S	S	S	O	-	-
<b>VA507</b> Rigid carrying case	-	-	-	-	O	S	-
<b>SP-0400</b> Free hands kit	O	O	O	O	O	O	-
<b>SP-0500</b> Free hands kit	O	O	O	O	O	O	-
<b>CF800</b> Compact Flash Card	-	-	-	O	-	-	-
<b>MCR800</b> USB compact flash card reader	-	-	-	O	-	-	-
<b>YABAT0003HT1</b> Li-Ion 3,7V rechargeable battery	-	-	-	S	-	-	S

- : Not compatible | S: Standard | O: Optional



**HT ITALIA S.R.L.**

Via della Boaria, 40 48018 Faenza (RA) Italy

T +39 0546 621002 | F +39 0546 621144 | M export@htitalia.it | ht-instruments.com





# Diensten van EURO-INDEX

EURO-INDEX is fabrikant, importeur en distributeur van diverse A-merken op het gebied van test- en meetinstrumenten. Daarnaast leveren wij een groot aantal diensten om het gebruik van deze instrumenten in uw bedrijfsvoering te optimaliseren. Dit omvat uiteraard onderhoud, reparatie en kalibratie van de instrumenten, maar ook kennisdeling via EURO-INDEX Academy en verhuur van instrumenten.

## Geautoriseerd Service Centrum

EURO-INDEX b.v. is van alle vertegenwoordigde merken een Geautoriseerd Service Centrum. Dit betekent dat uw instrumenten worden behandeld door technici die zijn opgeleid door de fabrikant en beschikken over de juiste gereedschappen en software. Er worden uitsluitend originele onderdelen toegepast en de garantie van uw instrument, evenals de certificering (ATEX, EN50379, etc.) blijven intact.

## Kalibratielaboratorium

Het laboratorium in Nederland beschikt over een RvA accreditatie naar EN-ISO/IEC 17025. Deze accreditatie geldt voor grootheden, zoals gespecificeerd in de scope bij accreditatienummer K105. RvA kalibratiecertificaten zijn internationaal geaccepteerd en is gelijkwaardig aan BELAC.



## Mobiele Service

Naast de vaste kalibratielaboratoria in Zaventem en Capelle aan den IJssel beschikken wij ook over een laboratorium op wielen met de naam "Mobiele Service". Dit biedt vertrouwde service en kwaliteit, bij u voor de deur!

## KWS®

KWS® is een uniek servicesysteem voor uw meetinstrumenten met periodiek onderhoud en kalibratie tegen vaste, lage kosten. Via een gratis webportal ([mijnkws.be](http://mijnkws.be)) heeft u altijd en overal beschikking over uw kalibratiecertificaten.

## Verhuur van meetinstrumenten

- Uitgebreid assortiment
- Nauwkeurigheid aantoonbaar door actueel kalibratiecertificaat
- Deskundig advies
- Complete levering inclusief accessoires

## EURO-INDEX Academy

- Trainingen, seminars en workshops
- Demonstratie- en instructievideo's
- Application notes



Servicebalie



Onderhoud, reparatie en kalibratie



Trainingen en seminars



Mobiele Service

Wijzigingen voorbehouden EURO-INDEX® VL 23001



**BELGIË**  
Leuvensesteenweg 607  
1930 Zaventem  
T: 02 - 757 92 44  
F: 02 - 757 92 64  
[sales@euro-index.be](mailto:sales@euro-index.be)  
[www.euro-index.be](http://www.euro-index.be)

**NEDERLAND**  
Rivium 2e straat 12  
2909 LG Capelle a/d IJssel  
T: +31 - (0)10 - 2 888 000  
F: +31 - (0)10 - 2 888 010  
[verkoop@euro-index.nl](mailto:verkoop@euro-index.nl)  
[www.euro-index.nl](http://www.euro-index.nl)

